

Layher 

More Possibilities. The Scaffolding System.

# SUCCESS STORIES

- Ideas
- Possibilities
- Solutions

#7

WIR SIND TISCH

YOUR  
MORE.  
THE POSSI-  
BILITIES  
FROM US.

# EDITORIAL

## Dear Readers,

Following a short pause, we are back today with a new magazine full of success stories for you. As you have surely already noticed, this magazine reflects the new, unmistakable Layher look that we introduced to the public at the most recent bauma trade fair in 2025.

Once again, the wide variety of stories we want to tell you is impressive. They are living proof of our cooperation with partners and your economic success. The news in the industry is relatively encouraging and indicates that the lowest point of the housing construction situation is behind us and we can look toward the future with optimism. Further significant revenue drivers in the construction industry include infrastructure measures such as bridge building and refurbishment, which are occurring at a remarkable pace. This all results in positive momentum for the scaffolding providers as well, and using our innovative scaffolding systems puts them in an optimum position for taking on all of these tasks.

We would like to begin at a storied and significant site in East-West German history: Tempelhof Airport in Berlin. Managing Director Nick Haseloff and his colleagues at Gerüstbau Tisch GmbH are responsible for the scaffolding for the refurbishment of the ceiling in the aircraft hangar and they are using the Integrated System from Layher. But the historical architecture is demanding. The load-bearing capacity of the building sections is insufficient, so the team has to suspend the entire scaffolding from the ceiling structure.

Our next stop is south of Munich: Otterfing in the Mangfall valley, to be exact. Here the specialists from Gerüstbau Westermaier GmbH, run by its two Managing Directors Franz Westermaier, Senior and Franz Westermaier, Junior, used our modular access system for facades AGS for the first time to ensure safe access to the roof of the church tower, which is 40 m high. Woodpeckers and exposure to the weather have taken their toll on its characteristic wooden shingles.

We return to the North for our third story, which takes place in Bremen. A local, traditional company, Wilh. Bädecker Gerüstbau, run by Managing Director Malik Tharia, used the modular access system for facades AGS from Layher for the refurbishment of the Town Hall's historical wood windows. A special feature of the work done by this unique construction team was planning the scaffolding based on a 3D laser scan because there were no reliable building plans. From this scan, the Layher laser scanning specialists created a digital twin, which was used for the scaffolding and statics planning.

For our final story, we remain in the North. More specifically, at Nietiedt Gerüstbau GmbH in Wilhelmshaven. To demonstrate that even large areas of scaffolding can be constructed quite economically with the SpeedyScaf System. Nietiedt, a provider that supplies all of Germany, used about 30,000 m<sup>2</sup> of this facade scaffolding for the new buildings at the Klinikum Oldenburg hospital. The system-integrated I-Guardrails, assembled from below from each secured level, meet TRBS requirements [German Technical Regulation for Operational Safety].

We hope you enjoy reading about the projects and watching the related video clips.



Managing Director  
Wolf Christian Behrbohm



# CONTENTS

# 06



**A milestone in East-West German history**

**Gerüstbau Tisch GmbH**  
Tempelhof Airport, Berlin

# 16



**Safety for the modern world with a view of the Alps**

**Gerüstbau Westermaier GmbH**  
Catholic Church of St George, Otterfing



**More Knowledge**  
**Sweets instead of bombs**  
Page 14



**More Knowledge**  
**How the Mangfall valley railway connected Otterfing to the world**  
Page 24



**More Knowledge**

**"You'll find something better than death anywhere".** The Brothers Grimm,  
The Bremen Town Musicians  
Page 34

26



**Safer scaffolding  
for Bremen's top  
landmarks**

**Wilh. Bädecker Gerüstbau GmbH**  
Historic Town Hall, Bremen

36



**Flagship project for  
Oldenburg and the  
entire Northwest**

**Nietiedt Gerüstbau GmbH**  
Klinikum Oldenburg hospital



**More Knowledge**

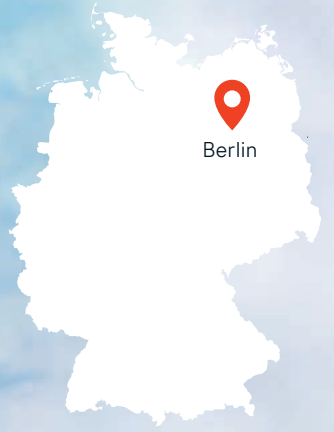
**Excessive Life,  
expressive art**  
Page 44

Gerüstbau Tisch GmbH

Tempelhof Airport, Berlin

# A MILE- STONE IN EAST-WEST GERMAN HISTORY

When it originally opened for scheduled flights in 1923, it was one of the first commercial airports in Germany and even busier than Paris, Amsterdam or London. The present terminal building, with its unusual arc shape and a length of around 1.2 km, was built between 1936 and 1941. In 1948, in the wake of World War II, it achieved fame far beyond Berlin's borders, when the "candy bombers" dropped vital supplies there during the American airlift that put an end to the Soviet blockade of West Berlin. Today, nearly a century after its construction, the concrete ceilings of the seven aircraft hangars are in urgent need of refurbishment if the monument is to be preserved for posterity. Tisch GmbH, the renowned Berlin scaffolding experts, run by Managing Director Nick Haseloff, were charged with placing the necessary 18 m of unsupported work platforms between the columns inside the buildings using Layher's Allround FW System.



# THE HANGING PLATFORMS OF TEMPELHOF

“What makes this project so special is the fact that we can't use the offices at the rear of the halls to absorb the loads from the work scaffolding, because they only have simple wooden roofs with no load-bearing capacity and additional loads on the walls must be avoided at all costs. We have no choice but to suspend our entire work scaffolding from the roof trusses”, explains Managing Director Nick Haseloff, who as an architect also has his eye on the structural requirements.

The scaffolders from Tisch GmbH chose Layher's Allround FW System to bridge the 18 m span between the columns. “We assemble the FW System bit by bit, starting from the work scaffold, and eventually span the full distance”, Haseloff continues. Before the sandblasting and concrete work can be carried out, a closed, watertight work platform made from OSB boards and special foil has to be built on the basic suspended scaffold, so that all material removed can run off together with any water. “The Allround FW System has a high load-bearing capacity. It needs to bear the enormous weight of the 28 t structure over the entire span and reliably transfer it to the roof trusses. What looks so easy from down below has pitfalls in the details”, says Dénes Frömling, Layher Area Sales Manager for Berlin. The complete structure was additionally reinforced with steel and aluminium beams to prevent the scaffolding from vibrating.



Brackets, metal rods and steel beams are used to suspend the Allround FW System.



Extra effort was required to suspend the work scaffolding from the roof trusses because the load-bearing capacity of the building sections was insufficient.

**“The high-load bearing Allround FW System needs to bear the enormous weight of the 28 t structure over the entire span and reliably transfer it to the roof trusses. What looks so easy from down below has pitfalls in the details”.**



Dénés Frömling (left),  
Layher Area Sales  
Manager, and  
Nick Haseloff (right),  
Managing Director of  
Tisch GmbH

# FULLY INTEGRATED INTO THE MODULAR ALLROUND SYSTEM

"Tisch's scaffolding specialists opted for Layher All-round Scaffolding in front of the service buildings at the back to erect birdcage scaffolding, providing access to the actual work platforms while also serving as a foundation for the four goods hoists in the hall", Frömling adds. Thanks to its standard dimensions, the FW System is fully integrated into the modular Allround System and can be connected to the Allround Scaffolding without any problem. Around 58,000 m<sup>3</sup> of scaffolding will be erected and dismantled here alternately in the course of the refurbishing work. A few halls have already been refurbished, each of them requiring about 10,000 m<sup>3</sup> of scaffolding, and the others will follow soon. "We've had 12 people working here on average for the past 18 months and we'll be kept busy for another two years at least before the work is finished", Nick Haseloff comments.



During the course of the project, an impressive 58,000 m<sup>3</sup> of scaffolding were erected, adapted and dismantled in the hangars again and again.

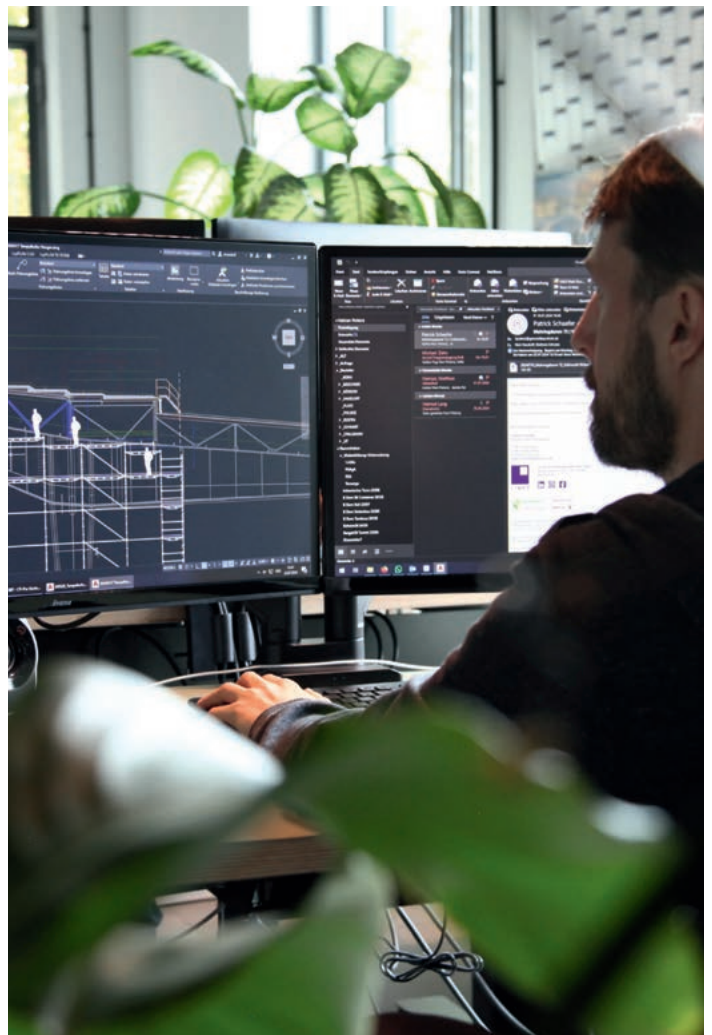


Layher Allround Scaffolding was used for the shoring structure in front of the interior building sections and it supports the front section of the work platforms below the ceiling.



The Layher Allround FW System is at the heart of the entire structure.

"As a scaffolder located in Berlin, with its tradition of an enclosed city, you have to be able to offer a comprehensive portfolio of services. That's why, here at the airport, we're not only building the scaffolding but also the complete work platforms for the sandblasters and the concrete workers. Our people are real all-rounders in that respect; they're in a position to build whatever it is that's needed themselves", the Managing Director reports proudly. The company has its own timber and steel construction facilities for this purpose, meaning that projects like Tempelhof Airport can be offered as turnkey solutions without having to involve any other service providers. The essential structural calculations for these challenging projects are performed by the Berlin firm in close cooperation with a specialised structural engineering consultant as well as Layher's technical office in Eibensbach.



Planning for both scaffolding and statics takes place together in the office of scaffolding specialist Tisch GmbH.



Managing Director Nick Haseloff can always be found with his team where difficult challenges are being solved with scaffolding.








Layher Allround FW System  
ready for assembly



# A MODULAR SCAFFOLDING PIONEER IN BERLIN AND BEYOND

When Fritz Tisch founded "Fritz Tisch Dachdeckerei" as a roofing company in Frankfurt in 1948, shortly after the end of World War II, it was the purchase of a few scaffold ladders that opened the first chapter in a long success story. Uwe Tisch joined the business in 1980, and only a few years later became a pioneer user of modular scaffolding from Layher. Following a call for tenders from Bewag, Berlin's electricity utility, in 1984, the West German scaffolding specialists travelled to Berlin, where modular scaffolding was as yet untried. This temporary visit quickly grew into something more and so the firm known today as Gerüstbau Tisch GmbH was established in West Berlin. In 1995, Tisch finally adopted the German capital as the centre of their operations. In the meantime, the scaffolders are an integral part of the cityscape in Berlin's Wedding district. The emphasis is on industrial and special-purpose scaffolding, and with 50 permanent employees currently on the payroll, Managing Director Nick Haseloff is never far away when the search is on for solutions to complex scaffolding challenges – whether in one of Berlin's many listed buildings, churches and museums or in an exciting project in an industrial building. Scaffolding solutions from Layher – always first choice!

## Used Products

-  Allround Scaffolding
-  System-free Accessories
-  Software



Video clip  
about the Tisch  
project

In the winter of 1948, as the Soviet blockade cut off the western sectors of Berlin from supplies, the people were on the brink of ruin. But their salvation came from the skies: the "Berlin Air Bridge". They provided not only vital goods, but also a symbol of hope in the divided city – along with a name that has not been forgotten to this day: the "candy bombers".

# SWEETS INSTEAD OF BOMBS

Berlin, 1948/1949 – famine conditions pervade the destroyed city, the streets are empty and the people cling to the last remaining sparks of hope. By blockading the transport of goods and people, the Soviets attempt to force the Western Allies to relinquish West Berlin and, as a result, all of Germany into their sphere of power. The Allies react by supplying the western sectors by air. During the blockade, which cut people off from everything necessary for survival, aircraft land daily at Tempelhof Airport. These flights delivered more than 200,000 t of goods – primarily food, coal and candy.

It is said that U.S. pilot Gail Halvorsen started to drop chocolate and other sweets fastened to small parachutes over the city as his aircraft approached to surprise the children. Other pilots latched onto the idea and soon the creative Berlin residents were affectionately calling the arriving aircraft “candy bombers”.

The Air Bridge became a symbol of resistance and support of the Western Allies for West Germany. They supplied the people with more than just food – they inspired confidence and the belief in a better future. Each aircraft that landed at Tempelhof brought the Berlin residents not only the necessities for survival, but also a bit of hope and humanity. The Berlin Air Bridge continued until May 1949, when the Soviets gave up their unsuccessful blockade, but the name “candy bomber” is still well known today as a remembrance of the solidarity and the unshakeable will of the people to stand their ground.



Gail Halvorsen  
“The Candy Bomber”



Gerüstbau Westermaier GmbH

Catholic Church of St George, Otterfing

# SAFETY FOR THE MODERN WORLD WITH A VIEW OF THE ALPS

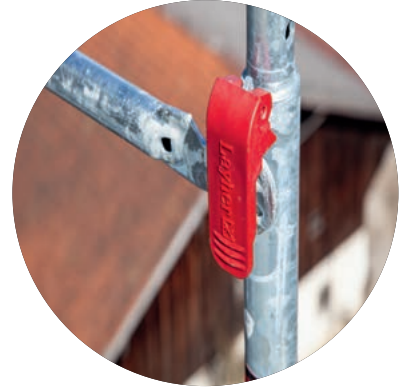
The small town of Otterfing is the northern gateway to the Bavarian district of Miesbach. With a population of 5,000, it is situated between Munich and the Alps, which seem close enough to touch when the weather is right. The Catholic Church of St George, built in the late Gothic style around 1530, stands in the middle of the cemetery and with its 40 m high bell tower is a prominent landmark that can be clearly seen from afar. Woodpeckers and exposure to the elements have taken their toll on the wood shingles over the years and the tower roof is now in need of general refurbishment. Specialists from Gerüstbau Westermaier GmbH of Bockhorn, a good 60 km away, have already taken on similar scaffolding challenges in recent years while working on other projects in the local region. Franz Westermaier Senior and Franz Westermaier Junior are the firm's joint Managing Directors. The decision to use a 3D laser scan as the basis for planning and the first-ever deployment of around 40 t of Layher's modular access system for facades AGS were what made the Otterfing assignment unique.



Otterfing



# OPTIMAL COMBINATION OF SAFETY AND PRODUCTIVITY



With the AGS System, assembly from a secured position is no problem.

“To get straight to the point, the AGS System convinced us both in terms of handling and because it combines easily with our other Layher material – we’ll definitely be using it for more projects in the near future”, says Managing Director Franz Westermaier Junior in conversation with our Area Sales Manager, Ardian Gashi. In order to comply with current safety regulations, the Bavarian scaffolders opted for the modular access system for facades AGS made by Layher, whose AGS standard and AGS guardrail permit assembly from secured levels. An external platform stairtower and additional scaffolding construction hoist facilitate access and material transport.

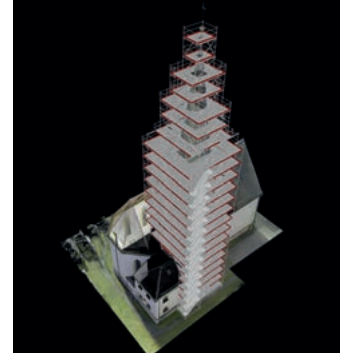
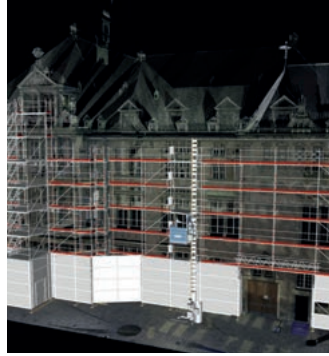
**“The AGS System convinced us both in terms of handling and because it combines easily with our other Layher material”.**

## TWO GUARDRAIL VARIANTS FOR ANY SCAFFOLDING TASK



Safety can be that easy.

The red levers at the AGS guardrail connection enable the guardrail to be secured without tools during assembly. They remain closed during advancing fitting and removal from the secured level. Opening the bar allows the AGS guardrails in Otterfing to be removed quickly and easily once the scaffolding is complete – again, with no need for tools – for instance, in order to supply material to the construction site or dismantle the bell. If this is not desirable for safety reasons, the AGS guardrail Fixx can be utilised instead for a permanent guardrail solution. The matching AGS double end guardrail secures the open ends of the AGS System and can likewise be assembled quickly and easily from the secured level without additional couplers while advancing.



The digital twin makes detailed scaffolding planning possible even without reliable blueprints.

# 3D LASER SCAN MAKES A LOT OF THINGS BETTER – AND ANYTHING POSSIBLE

**“That’s why we decided to have the church scanned by Layher 3D laser scanning specialists from Eibensbach”.**

“As with many historic buildings, no reliable plans or structural analyses exist for the church in Otterfing”, the Managing Director explains. “That’s why we took Layher’s advice to have the church scanned by Layher 3D laser scanning experts from Eibensbach as a basis for planning.” That data was then used to generate a digital twin and plan the scaffolding for the tower in 3D in LayPLAN CAD, right down to the last detail. “That way, we’re much more efficient from the point of view of both material logistics and assembly, and we avoid any unpleasant surprises on the construction site”, Franz Westermaier Junior emphasises. “It often happens with historic buildings that the structure we’re obliged to deal with in reality has little or nothing to do with the original plans. In that case, a flexible response to each individual situation is called for. Apart from costing time and money, without the umpteen standard components in the Allround System that wouldn’t even be possible at all.”



# THE STRENGTHS OF THE LAYHER INTEGRATED SYSTEM



Since the AGS System is fully integrated into Layher Allround Scaffolding, any system components can be used. In Otterfing, for example, the top section of the tower is octagonal in shape. The resulting corners were a very simple matter to close using U-steel decks 45°. In view of the tower's unclear structural properties, the top section of the scaffolding also had to be shored with Allround brackets fastened to the 1.3 m thick tower wall. The modular Allround System includes suitable inner brackets, which enable the scaffolding to be adapted to the spire's geometry step by step all the way up to the tip, ready for refurbishing.

Allround wall brackets provide reliable shoring for the upper scaffolding sections.



The scaffolding corners resulting from the architectural geometry are covered securely by U-steel decks 45°.



# PARTNERSHIP GOING BACK MORE THAN 35 YEARS

When Franz Westermaier Senior – a master butcher by trade – founded his scaffolding business back in 1988, the Deutschmark was still around and the Berlin Wall still standing. At the time, no one could have imagined that, today, the firm would be operating very successfully as a specialist for new building construction, monument preservation, refurbishment and industry on 6,000 m<sup>2</sup> of premises in the Greater Munich area. "From the outset, the scaffolding components that my father bought second-hand were always Layher material", Franz Westermaier, Junior recalls. "And there's never been any doubt in my mind that Layher, who were the first provider of a revolutionary modular system with Allround Scaffolding, offer better solutions and better quality than anyone else in the market." It comes as no surprise to learn that the Westermaier yard is occupied exclusively by Layher material. Layher Area Sales Manager Ardian Gashi is in no doubt: "We believe it's the partnership with companies like Westermaier that's the basis for our success. After all, frank, two-way communication between us as manufacturers and the professionals working on the construction site is fundamental to our ability to keep on developing even better solutions."







Scaffolding foreman Adrian Seuß (left), Layher Area Sales Manager Ardian Gashi (centre) and Managing Director Franz Westermaier, Junior (right) take a close look at the modular access system for facades AGS.



Since the company was founded, Layher has been a reliable scaffolding system supplier for the Westermaiers.




### Used Products

-  AGS System
-  Allround Scaffolding
-  System-free Accessories
-  Software



Video clip about the Westermaier project

# HOW THE MANGFALL VALLEY RAILWAY CONNECTED OTTERFING TO THE WORLD



When the first train rolled through Otterfing in 1857, this small town between Munich and Holzkirchen was still a tranquil farming village in the country. The newly constructed Mangfall valley railway brought fundamental change. It made this rural area, which had been isolated for a long time, into an easily accessed station in the network industrialization.

The route from Munich to Rosenheim, and later even farther toward the Alps, was significant both strategically and economically because the relatively new Kingdom of Bavaria focused on railways as the motor of economic, military and political development. For this small community, a train connection proved to be an important step into the future.

The construction of the railway through the Mangfall valley and the limited technical options at the time presented both planners and those implementing the project with specific challenges: A hilly landscape, very wet soils and painstaking, manual excavation work made execution difficult. For this reason, the tracks were not laid along the shortest, but instead, the most feasible line. Otterfing was lucky and profited from this routing, even if the rail line imposed a new order by making visible cuts in the landscape. The train station created a new centre point for the town. Goods, news and people travelled more quickly to and from Munich. The train structured the everyday life of the people and the schedule supplemented the church calendar, which had remained unchanged for so long. For Otterfing, being close to the train meant being close to the future.

In the 20th century, the function of the Mangfall valley train transformed from a transportation line for goods into an important lifeline for the entire region. Otterfing profited from being close to the city without having to give up its independence and history. The train enabled a completely new way of living: residing in the "green" country, working in the city. Even today the Mangfall railway is more than infrastructure; it is a symbol of successful development and the preservation of a rural atmosphere all around large, prosperous cities.

So those who hear a train roll past Otterfing are also hearing more than 160 years of continuity: the consistent sound of a rail line that shaped the area without removing its identity.



The class B XI steam engines of the Royal Bavarian State Railways were built by Maffei for deployment in Bavaria.





Wilh. Bädecker Gerüstbau GmbH

Bremen's historic Town Hall

# SAFER SCAFFOLDING FOR BREMEN'S TOP LANDMARKS

Every year, 37 million day visitors travel to Bremen on the River Weser to visit the historic city centre and the city's numerous well-known landmarks such as the medieval Schnoor Quarter, the mighty Roland statue and the monument to the Town Musicians of Bremen. They stand alongside Bremen's historic Town Hall with its impressive Renaissance facade and very close to the new Town Hall built in 1913, with a brick facade facing the cathedral court and the market square. It was necessary to erect scaffolding around this facade, so that the carpenters charged with dismantling and refurbishing the wooden windows could work in compliance with listed monument regulations. This task was contracted to Wilhelm Bädecker Gerüstbau GmbH, a long-established local firm, who put their trust in the new modular access system for facades AGS made by Layher. A 3D laser scan of the building served as the basis for planning. A digital twin generated by Layher's laser scanning specialists was subsequently used to plan the scaffolding and the structural requirements.



Site Supervisor Lars Ukena (front) can employ his team even more safely and efficiently with the AGS System.

# TRADITION MEETS MODERNITY

"This construction site at the historic Town Hall was our first time using the AGS System. We wanted to assemble the entire scaffolding from a secured level without any extra PPE. That is not only safer but also more efficient", says Malik Tharia, Managing Director of Wilhelm Bädecker Gerüstbau GmbH. The three-strong construction crew erected the scaffolding, together with the associated Layher platform stairtower and the loading platform made from Allround material, little by little over a four-week period, so that the restorers could start work on one side while the scaffolding was still going up elsewhere. For the new AGS System, this was a great chance to show off what it can do at a location steeped in history.

The new AGS System consists of an AGS standard and an AGS guardrail, which are installed from a secured level. Two different types of guardrail are employed in Bremen: the AGS guardrail Fixx, which cannot be removed when assembled, preventing unauthorised dismantling, and the AGS guardrail, which is removed by opening the levers at a defined point, making it easier for the various trades to transport material. The matching AGS double end guardrail can likewise be assembled quickly and easily from the secured level to secure the open ends without any additional bolting.



A legendary landmark located right at the Bremen Town Hall – the bronze statue of the Bremen town musicians was created in 1953 by Gerhard Marcks.



**“At this construction site at the historic Town Hall we used the AGS System for the first time to be able to erect the scaffolding consistently from a secure position and, therefore, without additional PPE”.**

The employees of Wilh. Bädecker Gerüstbau GmbH used the AGS System quickly and routinely to erect the work scaffolding safely.



To refurbish the historically protected wooden windows, the AGS System was used to provide safe access for those doing the restoration work.



Lars Ukena is more than pleased with the new AGS System.

# EVERYTHING FITS TOGETHER PERFECTLY

The AGS System is fully integrated into the Layher scaffolding system and is simple to combine with all standard Allround components. "In other words, we can incorporate our existing Allround material into the basic AGS structure flexibly and easily, for instance in order to close open corners with U-steel decks 45°, realise deck edges flush with the facade using TipTop brackets or scaffold recesses in the structure with larger U-console brackets. This flexibility is a hallmark of Layher Allround Scaffolding and it's one main reason why we're a satisfied and loyal Layher customer", Tharia comments. Owing to the building's special location and immense importance, the bottom four metres of the scaffolding are completely clad with Layher Protect cassettes to prevent unauthorised access to the construction site.



With U-steel decks and console brackets, scaffolding can be erected quickly and safely around large protrusions in the building envelope.

# RELIABLE PLANS? NO CHANCE!



The mobile 3D laser scanner captures the building structure step by step.

When buildings like Bremen's Town Hall have been regularly added to or converted and extended over the centuries, meaningful blueprints are mostly non-existent. The ability to survey structures in great detail by taking a 3D laser scan and using it as the basis for efficient digital scaffolding planning considerably simplifies the overall process. "In the meantime, scaffolding is to a large extent civil engineering

through and through. It involves a lot of structural analysis, which is why we need reliable plans, flexible scaffolding material and strong partners. As a satisfied Layher customer, we benefit enormously from the broad idea underlying the Integrated System and the wide range of services on offer, which constantly make more and more things possible for our own customers", Tharia explains. "The 3D images from the scans are so detailed that they're not only useful for creating very precise plans of our scaffolding. City officials are contemplating using our scans too – recycling them, as it were – to document the fabric of their buildings", adds Lars Ukena, the site supervisor responsible for the project at Wilhelm Bädecker Gerüstbau GmbH. Digital planning as part of LayPLAN SUITE moreover makes material logistics more efficient, which is a highly relevant factor when it comes to city-centre construction sites.



The features of the entire Town Hall were captured in great detail with a 3D laser scan. In the form of a digital twin, this information was applied for reliable scaffolding planning and material logistics at the Bremen city centre.

# OUR IDEA OF PARTNER- SHIP

Ingo Barge, Area Sales Manager, and René Stender, Regional Sales Manager, both at Layher, agreed: "Working together as partners with the scaffolding erectors from Bädecker lays the foundation for the success of both sides". The Bremen firm's scaffolding specialists received instruction in the AGS System at the Layher Training Centre in Eibensbach and were thus able to profit directly from the experience of Layher's field service personnel. "We also collaborate closely on many other projects and this particular one is an impressive example: the 3D laser scan of the City Hall was the starting point for joint planning with the Technical Office in Eibensbach", Ukena reports.

His company have upped their technical and human resources accordingly and are increasingly able to take care of digital planning independently thanks to their own draughtsman and LayPLAN SUITE software.



A generously proportioned stairtower provides safe access for those doing the restoration work.



Digital planning documentation on site provides an overview.

# IN AND AROUND BREMEN

When Wilhelm G. Bädecker founded his carpentry business back in 1896, scaffolding was still built strictly from wood and was hence intrinsic to the company's field of activities from the outset. Wilhelm Junior, the third generation, was quick to respond to the new challenges arising in the wake of the Second World War by switching completely to steel and aluminium scaffolding. Klöckner Stahlwerke Bremen was founded in 1954 and soon became a regular source of orders, prompting Bädecker to open a branch office in the same city. The close partnership stimulated steady growth. What's more,

**Together, the companies form an effective team in Bremen and "umzu", which means "around the area" in the Low German dialect spoken in Bremen.**






the Bremen specialists are long-time scaffolding partners of the State of Bremen and at the forefront whenever public contracts are put out to tender. "Wilhelm Bädecker Gerüstbau has played a central role in Bremen's cityscape ever since it was first set up. We're an established company and wherever construction or refurbishment work is carried out, we've traditionally been responsible for the scaffolding. Famous landmarks like the Town Hall, the Roland statue, churches and the port are frequently scaffolded by us too in preparation for refurbishing. We're a Bremen firm and it's a privilege and a duty at once for us", Managing Director Malik Tharia answers when asked to sum up his commitment.

In 2022, Wilhelm Bädecker Gerüstbau GmbH became part of Bremer Mathari Holding GmbH, which also includes STE-BA Gerüstbau GmbH and Mathari Lift GmbH – an especially effective team in around Bremen.



Wilh. Bädecker Gerüstbau GmbH Managing Director Malik Tharia (left), Layher Area Sales Manager Ingo Barge (centre) and Site Supervisor Lars Ukena (right)

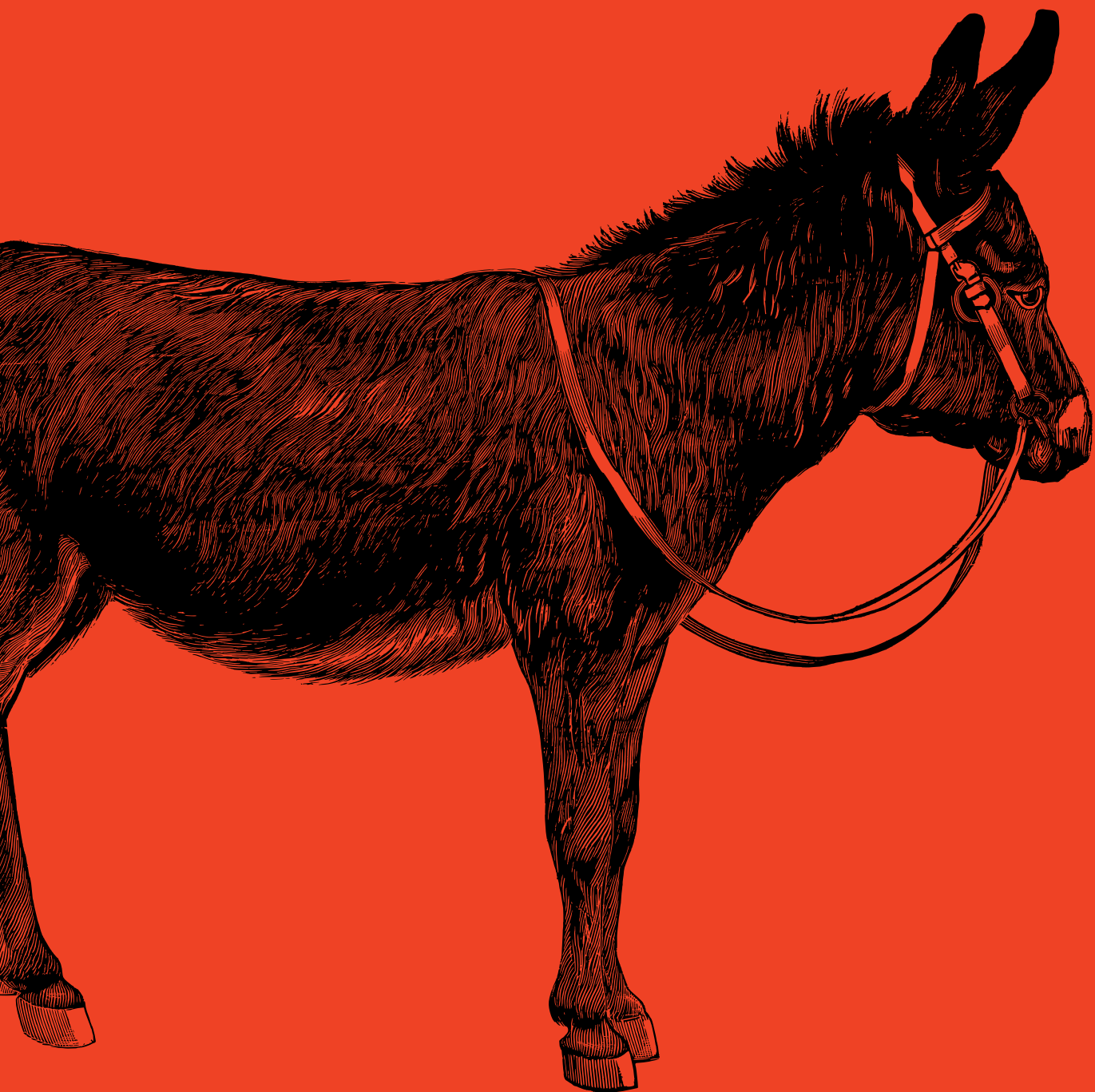
## Used Products

-  AGS System
-  Allround Scaffolding
-  System-free Accessories
-  Protective Systems
-  Software



Video clip about the Bädecker project

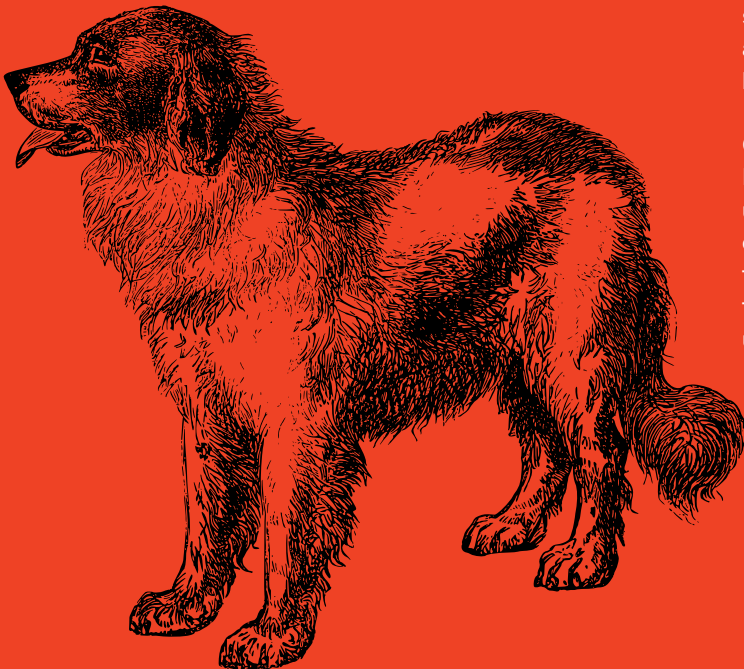
This saying comes from the Grimms' fairy tale of the Bremen Town Musicians, which is, in literary terms, an animal fable. It stands for the hope that, even if they are old or in difficult circumstances, working people can find a new direction if they stick together and rely on their own abilities. It symbolizes the fate of many older servants and maids at that time.



**"YOU'LL FIND SOMETHING BETTER THAN DEATH ANYWHERE; YOU HAVE A GOOD VOICE, AND IF WE MAKE MUSIC TOGETHER, IT WILL SOUND WONDERFUL."**

This sentence is often quoted to symbolize a new start, community and finding a new purpose.

If you stand in front of the historic Town Hall at the Bremen market square at dusk and peer left and right around the corner, the impressive silhouette of a huge figure appears in the twilight. If, after the initial shock subsides, you look a bit more closely, you will see that the bronze statue of the four Town Musicians gave you the shivers. On top of a stone pedestal stand the tale's four heroes – the donkey, the dog, the cat and the rooster – on top of each other, as in the story, and they bring the well-known children's tale to life.



In the story, the old donkey is supposed to be sold because he can no longer work hard enough. He escapes and wants to become a town musician in Bremen. On the way there, he meets, respectively, a dog, a cat and a rooster. These three are also old and supposedly ready to die. They follow the donkey and also want to become town musicians. On their way, they enter a forest and decide to sleep there. They discover a house where thieves are enjoying a feast. They stand on each others' backs to form a tower in front of the window and "sing" so loudly that they scare and drive off the thieves. The animals sit down at the table and stay overnight in the house. The four heroes like the house so well that they stay on.

On 30 September 1953, the bronze statue of the Bremen Town Musicians by Gerhard Marcks was set up – at first, on a trial basis – in front of the left side of the Bremen Town Hall, and despite thoroughly contentious discussions, it remained. Today, in addition to Bremen's Roland statue, it is among the most popular landmarks of this Hanseatic city. People like to tell visitors that if they touch the donkey's front legs, a wish will be granted. You can clearly see where the donkey's legs are shiny because they are touched so often.



Oldenburg



Nietiedt Gerüstbau GmbH

Klinikum Oldenburg hospital

# FLAGSHIP PROJECT FOR OLDENBURG AND THE ENTIRE NORTHWEST

If you take a closer look, it is only logical that special attention should be paid to the physical safety of the workers when building a new hospital. Perhaps one more reason why the scaffolding erector commissioned, Nietiedt Gerüstbau GmbH from Wilhelmshaven, relied on SpeedyScaf from Layher, with its system-integrated and TRBS-compliant I-Guardrails, assembled from below from each secured level, for the more than approx. 30,000 m<sup>2</sup> of facade scaffolding for the new buildings at Klinikum Oldenburg hospital. The premise for its development was that the solution should be compatible with the existing SpeedyScaf material and not bring with it any disadvantages during assembly, making it a genuinely cost-effective alternative. Single-person assembly of the lightweight, single-part frame construction from a secured level can be easily integrated into the assembly process and is a very safe and efficient solution for larger scaffolding areas, too.

# CONSIST- ENTLY SAFER

"Safety is a top priority in our company. We don't just pay lip service – we monitor it very strictly on our construction sites. That's why collaborating in the development of the I-Guardrail was a matter of course for us in order to improve the safety of our employees", says Tobias Hansjürgens, Managing Director of Nietiedt Gerüstbau GmbH, explaining the company's philosophy. "Furthermore, we insist on the highest quality standards in our work, and when it comes to scaffolding, the market leader, Layher, is naturally on our supplier shortlist."

"With frame scaffolding, safer assembly was often difficult and only possible with additional PPE. However, the latest TRBS demands new solutions. We prioritise protective measures according to the TOP principle. It starts with helpful "T"echnical measures, which include the scaffolding materials used, such as the I-Guardrail. Step 2 is the corresponding "O"rganisational framework, which we have created with four of our own in-house, full-time safety specialists. Finally, there are the "P"ersonal measures, which we ensure above all by consistently wearing PPE on our construction sites", says the scaffolding expert.



Scaffolding construction has long been a complicated engineering feat and digital systems are used to plan and implement it efficiently.



Before starting work, the project is discussed on site down to the last detail.



**30,000** m<sup>2</sup>  
 of Layher SpeedyScaf  
 with I-Guardrails  
 erected

At the Klinikum Oldenburg hospital, up to 30,000 m<sup>2</sup> of SpeedyScaf with I-Guardrails was used in the course of the project.

**SAFETY  
 MEETS  
 EFFICIENCY**

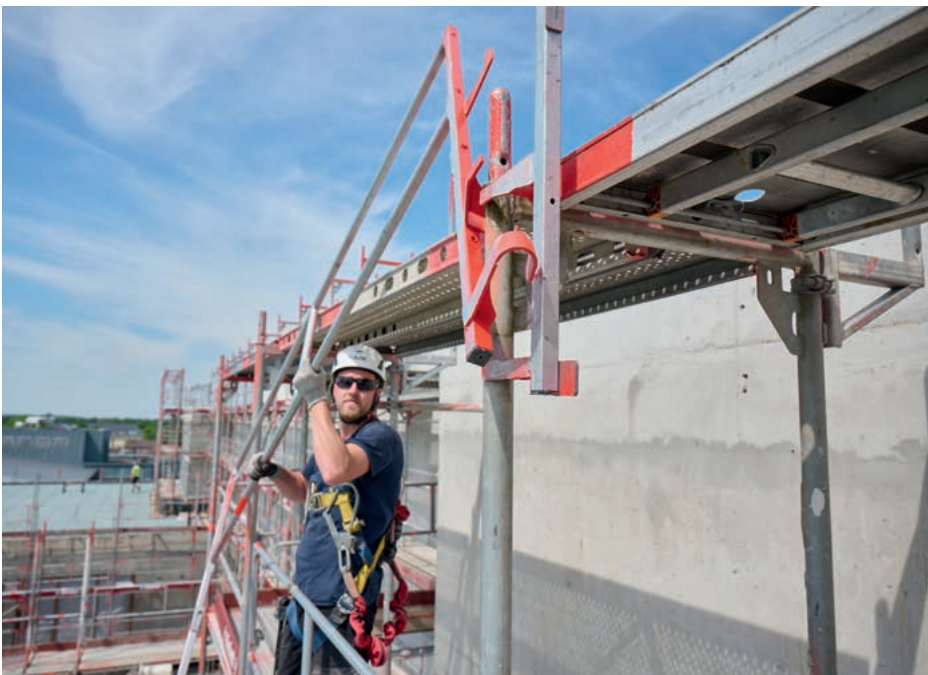
In order to make Klinikum Oldenburg hospital fit for the future, two large new buildings were erected on the site. A five-storey extension and a four-storey perinatal centre with a total of 370 beds complement the existing facilities. Nietiedt Gerüstbau GmbH was already involved in construction of the shell as a scaffolding partner, and, with a crew of four to six erectors, erected a good approx. 30,000 m<sup>2</sup> of Layher SpeedyScaf with I-Guardrails to facilitate installation of the external facade while construction was in progress. "Our scaffolding erectors are fully trained in assembly of the I-Guardrail, so even scaffolding as large as this is no problem – quite the opposite", explains Andreas Janssen, Site Supervisor responsible for the project. "Thanks to the advancing guard-rail, our erectors no longer have to attach their PPE to the scaffolding. This gives them greater freedom of movement without jeopardising their safety. As such, the system allows us to combine efficiency and safety in the best possible way!"

"In order to also meet the changed legal framework conditions and stricter safety requirements when using the SpeedyScaf System, we have collaborated closely with our customers to develop the I-Guardrail and together worked to continuously improve it", explains René Stender, Regional Sales Manager at Layher, introducing the topic. "For such close cooperation to work, you need a common understanding of the practical requirements on the construction sites and an openness on the part of the manufacturer and their sales team to see potential for product development in these requirements." "All of this is the case with Layher, making the company the customer-focused and flexible partner we need for our work to be successful", concludes Tobias Hansjürgens. "For us, that makes all the difference!"

**"To meet the requirements of the changed legal framework, even when using the SpeedyScaf System, we developed the I-Guardrail".**



# I FOR INTEGRATED SAFETY



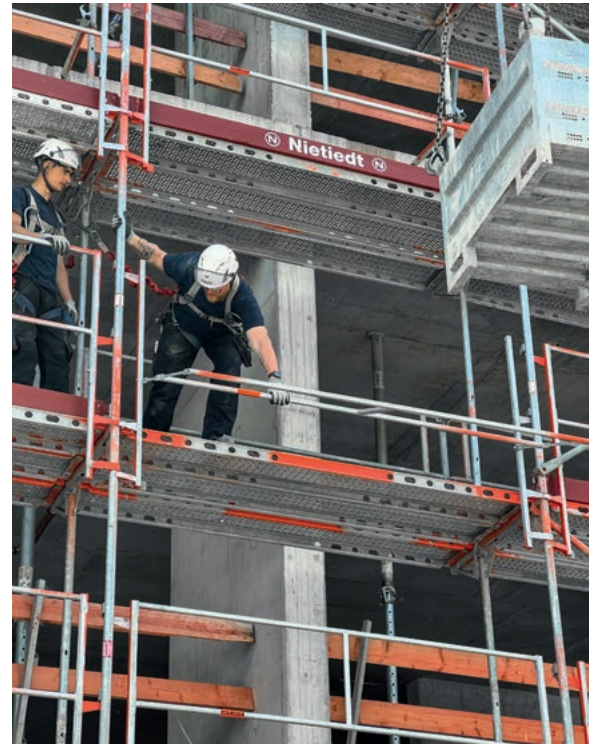
The I-Guardrail can be very easily installed from a secured position.



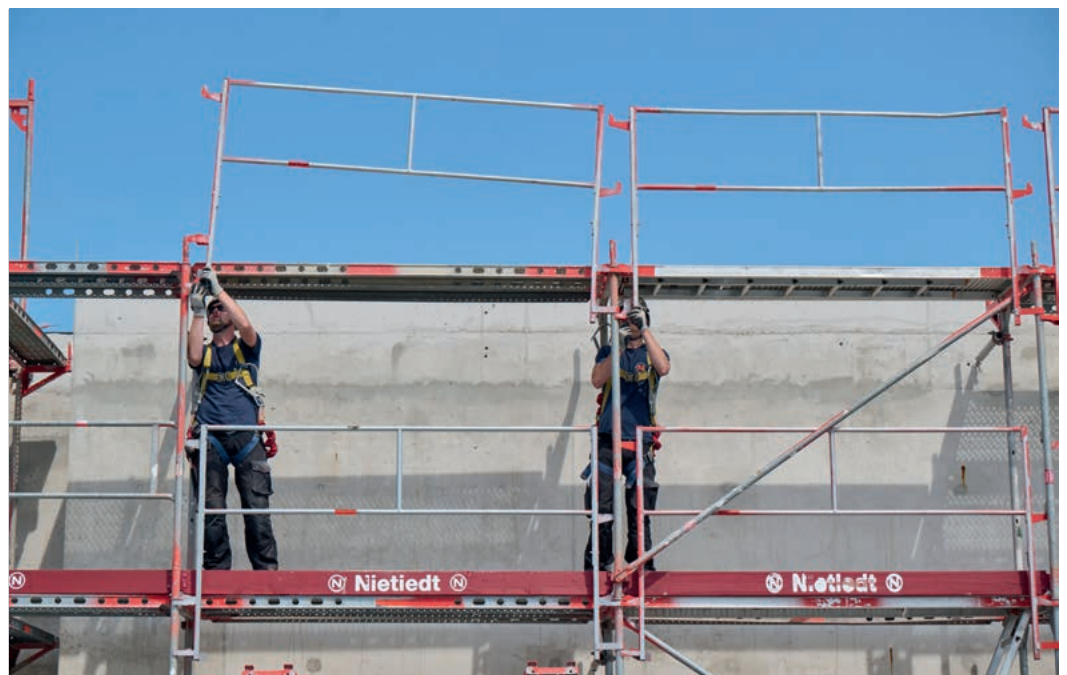
As before, assembly can still be handled by one person.

# I FOR INTEGRATED SIMPLICITY

The I-Guardrails are simply assembled from below from the secured level, advancing forwards. The decks are then assembled and you can climb on to the secured level. This means the scaffolding erectors no longer need to attach their PPE to the scaffolding. The guardrails and decks are then secured by attaching the next frames. Thanks to a matching, crane-movable tube pallet, the frame and matching guardrails form a single unit and can be transported together to save space. Once installed, the I-Guardrail can no longer be dismantled and therefore reliably protects subsequent trades from the consequences of unauthorised dismantling. When using the hinged I-Guardrail, it can be opened with a special key and folded down in order, for example, to bring materials onto the scaffolding or into the building. This means that the construction site can be stocked with materials even with the scaffolding fully erected.



With the hinged I-Guardrail, individual scaffolding decks can be opened with a special key, e.g. to bring in materials.



SpeedyScaf with I-Guardrails can also be used efficiently for larger areas of scaffolding.

# FROM THE NORTH SEA TO THE MAIN

The Nietiedt Group has its beginnings in the 1930s and has grown since the war to an impressive workforce of 600 permanent employees. What began purely as a painting and decorating business has developed since the 1960s into a group comprising many different trades and 16 locations across Germany, covering a wide range of services in connection with construction and building protection. The scaffolding division is now the largest independent business unit, with headquarters on the impressive 3.6 ha site at the oil terminal in Wilhelmshaven. It's from here that Nietiedt's scaffolders cover the entire country. Right from the start, the company has worked exclusively with scaffolding solutions from Layher. For three generations, the name Nietiedt has stood for quality and safety, and the company is one of the largest and most modern service providers in the scaffolding sector, with its technically sophisticated craftsmanship.

15 locations  
600 employees throughout Germany



For many years, the Nietiedt headquarters in Wilhelmshaven has been an important partner for Layher far beyond northern Germany.






Great material availability for all projects in the area of Wilhelmshaven



Customized logistics systems enable reliable transport for the I-Guardrails.



### Used Products

-  SpeedyScaf
-  System-free Accessories
-  Software



Video clip about the Nietiedt project



At the construction site, Layher logistics solutions demonstrate their tried and tested efficiency.

# EXCESSIVE LIFE, EXPRESSIVE ART

**Horst Janssen (born 14 Nov. 1929; died 31. Aug. 1995) was one of the most outstanding and prolific illustrators and graphic artists of the 20th century. Janssen grew up in Oldenburg in Lower Saxony, where the "Horst Janssen Museum" regarding him and his work opened in 2000. Janssen was not only a gifted illustrator, but also a ladies' man, brawler and drinker.**

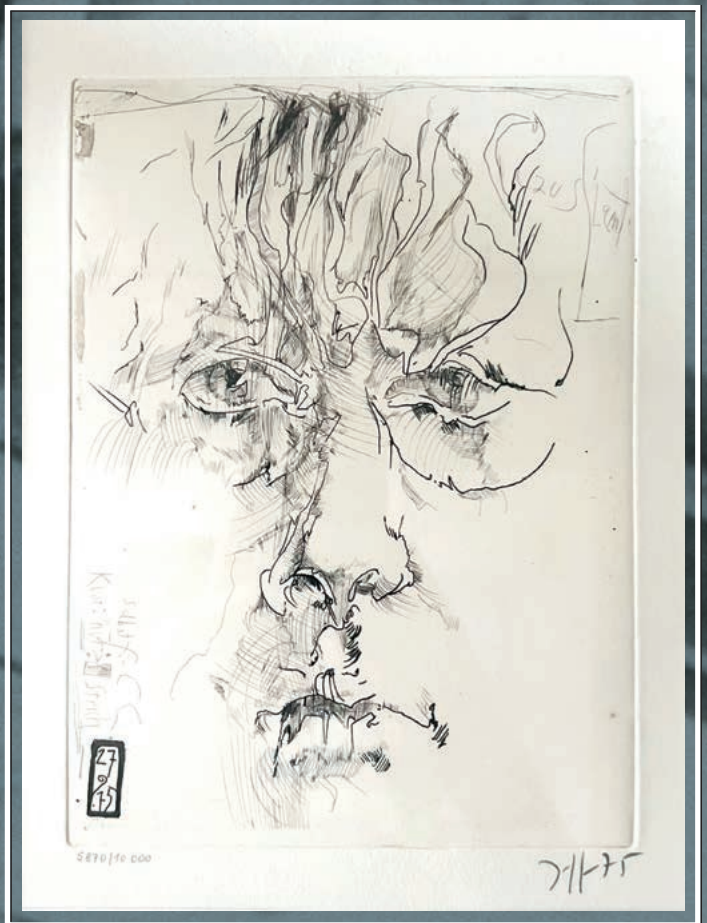
Horst Janssen was born in Hamburg on 14 November 1929 and he grew up in Oldenburg. His extraordinary talent as an illustrator was revealed early on in his school-days. At the end of the war, following the death of his mother and grandparents, his aunt brought the 16-year-old Horst to Hamburg to live with her. She supported his artistic education at the Landeskunstschule (art university), where the famous graphic artist Alfred Mahlau accepted him as a master student and fostered him.

After Janssen left his studies without a degree due to disagreements with the director, he worked in Hamburg for a few years. A versatile graphic artist, he earned his first substantial money with large-format, coloured woodcuts. During this time he also learned the art of etching, which he soon mastered perfectly and which, as a result, had a substantial, sustainable influence on his overall oeuvre.

The extremely productive man from Oldenburg left 4,000 prints and 47 etching cycles to posterity.

Particularly due to his participation in the XXXIV Venice Biennale in 1968 and Documenta 6 in Kassel in 1977, the impact of Janssen's work expanded internationally and his exhibitions were successful throughout the world. Until the end of his days, Janssen held an aesthetic position that, beyond all ideologies and "isms", can be reduced to the following motto: "Instead of a world-view, a view of trees". This motto elevates concrete visual experience over abstract ideologies.

In the later years of his life Janssen reminisced increasingly about the happy years of his youth in Oldenburg and in 1992 the city conferred hon-oured citizen status upon him. The artist died on 31 August 1995 and, at his own request, was in-terred at the St. Gertrude graveyard in Oldenburg. Since 2000, important works from his career as an artist can be seen at the Horst Janssen Museum in Oldenburg.



The extensive work of Horst Janssen also includes countless self-portraits of the artist.

# MORE EXCITING SUCCESS STORIES

about ideas, solutions, possibilities and  
much more can be found at  
[layher.com/en-de/company/success-stories](https://layher.com/en-de/company/success-stories)



## Image credit

Page 14–15

Image, children: Wikipedia

Image, Gail Halvorsen: © Courtesy  
of the National Museum of the United  
States Air Force

Page 25

Image, locomotive: Wikipedia

Page 34–35

Image, donkey: © Pixabay

Image, dog: © Pixabay

Page 44–45

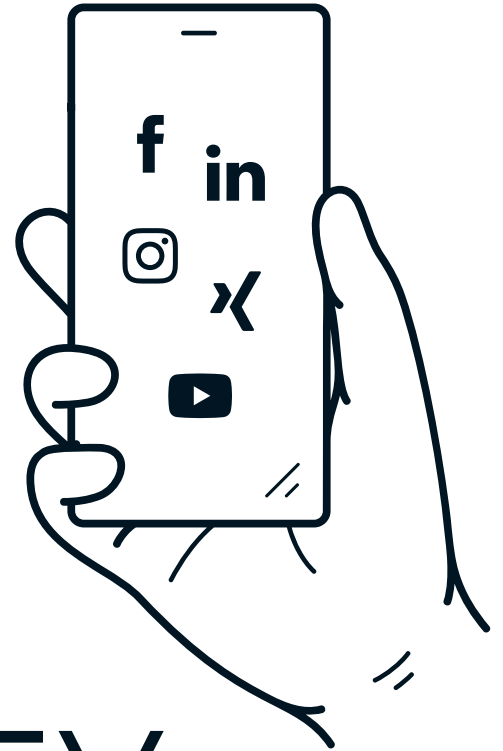
Image, H. Janssen: Wikipedia

Image, etching: Private

All other images are from our own  
photo sessions or planning information.



# YOU ARE PART OF OUR COMMUNITY



## Follow us on social media

#layher #layhermehrmöglich

Social media channels are the mass media of our time. We, too, want to take advantage to stay in touch with our users even better. We'd love you to follow us and actively engage in a dialogue with us.

Thanks to the hashtags #layher and #layhermehrmöglich, it couldn't be easier to contribute your own content, share your practical perspective and fill our channels with life.

Wilhelm Layher GmbH & Co KG

Ochsenbacher Strasse 56  
D-74363 Gueglingen-Eibensbach  
Germany

T +49 (07135) 70-0  
info@layher.com  
www.layher.com

For the sake of readability, we have chosen not to use all of the gendered forms of address (male, female, diverse (m/f/d)) in each applicable situation. All references to persons apply equally to all genders.